

INSTALLATION INSTRUCTIONS

4x4 and 5x5

STRUCTURAL PORCH POST

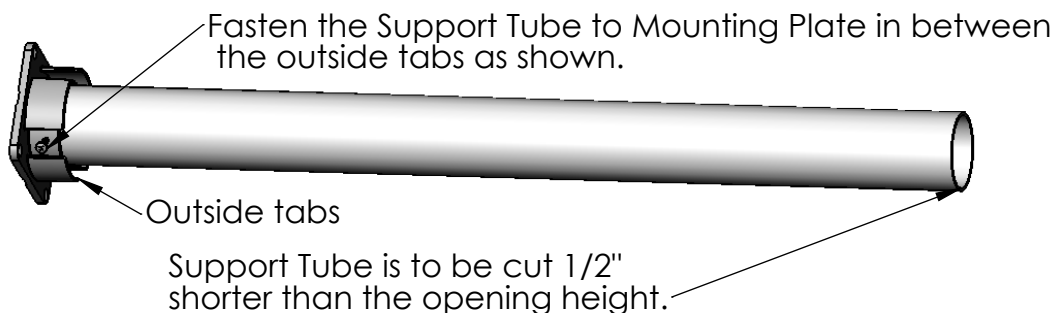
TOOLS REQUIRED:

- Chop/Mitre Saw with carbide tipped blade
- Tape measure
- Pencil
- Drill and drill bits
- Level

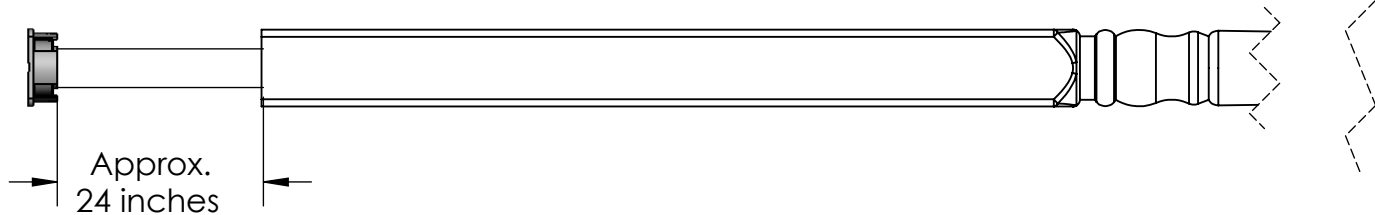
HELPFUL HINTS:

- DO NOT LAY VINYL PARTS ON ABRASIVE SURFACES
- 1/8" Tapcon anchors are recommended for installation on concrete. (Not provided.)
- Use a carbide-tipped multi-purpose blade.
- If any components are missing or defective, please call us at 888-570-5252

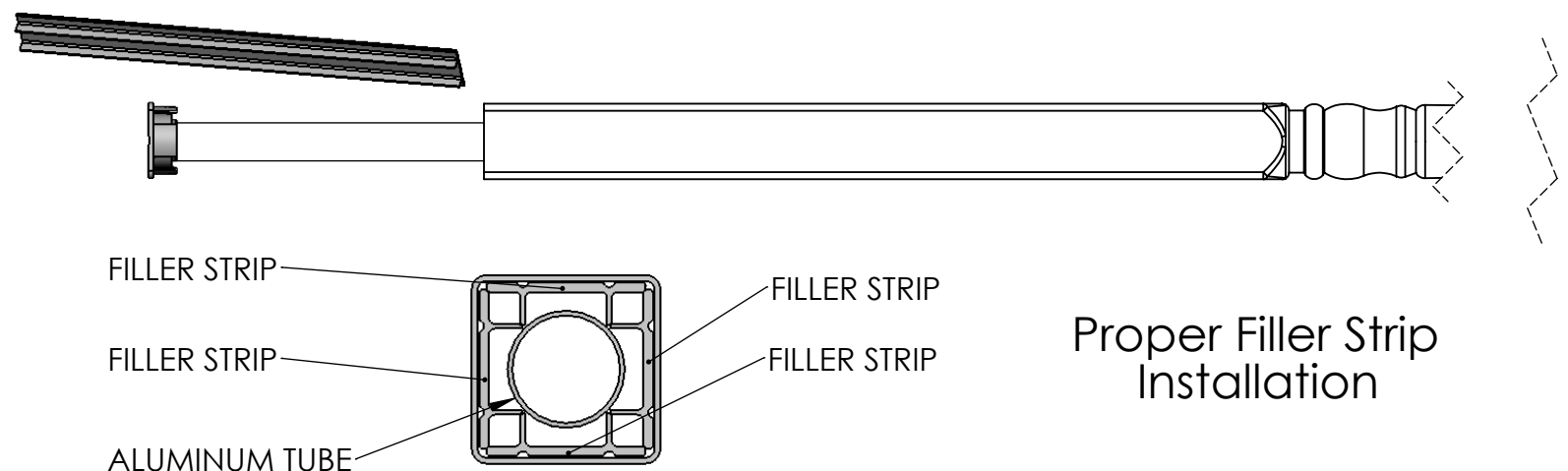
- 1) Measure the opening height and cut the Aluminum Support Tube 1/2" shorter than that height.
- 2) Insert the Aluminum Support Tube into the Mounting Plate and fasten it together using the (4) #10 x 1.000" screws provided.



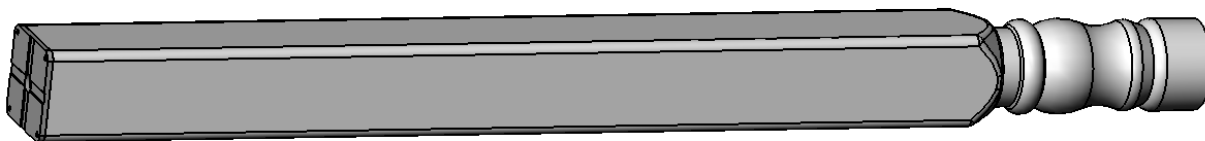
- 3) Cut the Molded Decorative Column 1-1/4" shorter than the opening height.
 - 4) Slide the Decorative Column over the Support Tube leaving about 24" exposed.
- Note: Do not slide Decorative Column on rough surfaces to avoid scratching.**



- 5) Slide a filler strip into each side of the Decorative Column in between the Aluminum Support Tube and the inside wall of the Column. Do this on all 4 sides.

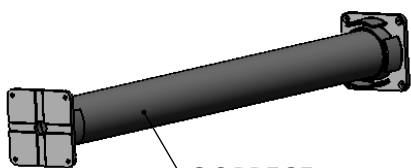


- 6) Slide the Decorative Column over the Filler Strips and down onto the Mounting Plate until they sit flush as shown.

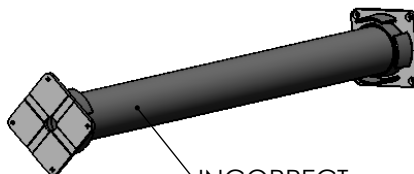


- 7) Place the second supplied Mounting Plate on the top of the Aluminum Support Tube And fasten it using the supplied (4) #10 x 1.000" screws provided. See step 2 for the proper location of these screws.

Note: The sides of the two Mounting Plates must be parallel to each other as shown below. The Decorative Post has been removed for clarity.

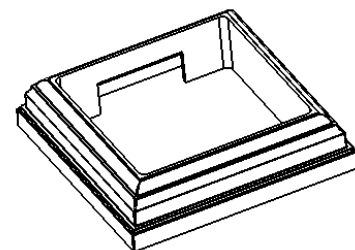


CORRECT



INCORRECT

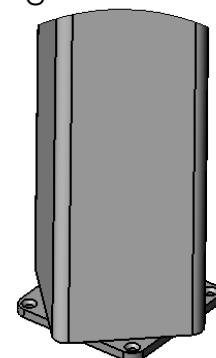
- 8) Cut out a notch on the inner wall of the (2) Post Skirts as show. This will be required to clear for screw heads installed in a later step.



- 9) Slide (2) Post Skirts (Not provided) onto the Decorative Column and place the entire assembly into the opening in the desired location.

- 10) Rotate the Decorative Column 45 degrees to expose the mounting holes in the Mounting Plates.

- 11) Fasten the Mounting Plates to the floor and ceiling using the appropriate fasteners (Not provided) for your application. Insure that the post is plumb and square.



- 12) Rotate the Decorative Column back to its correct position and attach it to the mounting plates on both the top and bottom using the (2) #10 x 1.000" screws provided.

Note: These screws need to be placed on the sides of the post that has the notches on the Post Skirts.

- 13) Slide the Post Skirts into their positions on the top and bottom of the post and affix using PVC glue.

