



FENCING

RAILING

ACCESSORIES

OUR BUSINESS HAS BUILT A REPUTATION FOR PROVIDING THE BEST CHOICES FOR STRONG AND DURABLE PRODUCTS, OUTSTANDING VALUE AND UNCOMPROMISING CUSTOMER SERVICE.

Our products are proudly made in the USA with our exclusive, engineer-tested manufacturing process that uses the highest grade materials to yield enduring beauty, lasting stability and performance.

Our products are crafted to handle extremes in temperature and withstand high winds. Our fencing assembly system is pre-routed and notched, requiring no screws or brackets for easy installation and added stability. We stand behind everything we make, and we'll be here for you before, during and after your purchase with our Limited Non-Prorated Warranty and lifetime implementation support.

## Fencing and railing that's built to last.

Set it and forget it: Low-maintenance, high-impact vinyl fencing and railing.

At Weatherables®, the only thing stronger than our products is the service that comes with them. Select from a complete line of vinyl fencing, ranging from privacy, pool and picket fencing to horse fencing in addition to vinyl railing all available in a wide array of styles, sizes and colors. Plus, you'll find all of the accessories and additions you need to truly customize your outdoor space.

Made from 100% virgin vinyl and the highest-grade materials available, our fencing and railing is 20-50% stronger than the competition. It's impervious to water and humidity and offers the industry's best UV protection. Virtually maintenance free, we offer the strongest, most durable, low-maintenance vinyl outdoor living products anywhere.

Available in White, Tan or Khaki

White

Tan

Khaki

- Premium quality vinyl made from the highest grade materials
- High impact
- Low maintenance
- Resists water and humidity
- Won't chip, rot or crack
- Up to 50% stronger than the competition
- Limited Non-Prorated Warranty
- Lifetime implementation support
- A+ Better Business Bureau rating
- Quickest lead times in the industry
- 5X Stronger than wood (based on 6606 PSI tensile strength)



# Privacy Fencing

The perfect backdrop to lush garden plants or lively backyard parties, our privacy fencing offers both seclusion and sophistication. Providing maximum privacy and requiring minimal maintenance, we offer a wide variety of styles from traditional to contemporary to complement virtually any architectural style. To ensure superior strength and durability, the bottom rail is reinforced with aluminum. Plus, all of our privacy fences 6 feet tall and below can be installed to withstand wind gusts of up to 130 mph.

Privacy made perfect with high performance and style.



### The Largo™

Height: 5' & 6'  
 Width: 6' & 8'  
 Picket Style: 7/8" x 13 7/8"  
 Interlocking Privacy .060"  
 Color: White, Tan



### The Clearwater™

Height: 5' & 6'  
 Width: 6' & 8'  
 Picket Style: 7/8" x 13 7/8"  
 Interlocking Privacy .060"  
 Color: White, Tan



### The Savannah®

Height: 4', 5' & 6'  
 Width: 6' & 8'  
 Picket Style: 7/8" x 6"  
 Tongue & Groove .065"  
 Color: White, Tan, Khaki, Gray



### The Ashton™

Height: 5', 6', 7' & 8'  
 Width: 6' & 8'  
 Picket Style: 7/8" x 6"  
 Tongue & Groove .065"  
 Color: White, Tan, Khaki



### The Mason®

Height: 5', 6', 7' & 8'  
 Width: 6' & 8'  
 Picket Style: 7/8" x 6"  
 Tongue & Groove .065"  
 (accents 7/8" x 1.5")  
 Color: White, Tan, Khaki



### The Augusta™

Height: 6', 7' & 8'  
 Width: 6' & 8'  
 Picket Style: 7/8" x 6"  
 Tongue & Groove .065"  
 Color: White, Tan, Khaki, Gray



### The Halifax®

Height: 5', 6', 7' & 8'  
 Width: 6' & 8'  
 Picket Style: 7/8" x 6"  
 Tongue & Groove .065"  
 (accents 7/8" x 1.5")  
 Color: White, Tan, Khaki



### The Bradford™

Height: 5', 6', 7' & 8'  
 Width: 6' & 8'  
 Picket Style: 7/8" x 6"  
 Tongue & Groove .065" (accents  
 3/4" round black aluminum)  
 Color: White, Tan, Khaki

*Privacy Fencing continued  
 on next page >*





**The Louisville™**

Height: 5', 6' & 7'  
 Width: 6' & 8'  
 Picket Style: 7/8" x 6"  
 Tongue & Groove .065"  
 (accents 7/8" x 1.5")  
 Color: White, Tan, Khaki



**The Annapolis™**

Height: 5', 6' & 7'  
 Width: 6' & 8'  
 Picket Style: 7/8" x 6"  
 Tongue & Groove .065"  
 (accents 7/8" x 1.5")  
 Color: White, Tan



**The Tremont™**

Height: 5', 6', 7' & 8'  
 Width: 6' & 8'  
 Picket Style: 7/8" x 6"  
 Tongue & Groove .065"  
 (accents 7/8" x 1.5")  
 Color: White, Tan, Khaki



**The Scottsdale™**

Height: 5', 6', 7' & 8'  
 Width: 6' & 8'  
 Picket Style: 7/8" x 6"  
 Tongue & Groove .065"  
 (accents 1.25" x 1.25")  
 Color: White, Tan



# Semi-Privacy Fencing

Our semi-privacy fencing offers just the right amount of seclusion for homeowners who want privacy without complete isolation. The pickets used in our semi-privacy fences slide through the routed rails for a true multi-dimensional look. The superior strength and durability of our fence is due in part to the fact that the bottom rail is reinforced with an aluminum insert.

Just the right amount of seclusion and style.



**The Huntington®**

Height: 5' & 6'  
 Width: 6' & 8'  
 Picket Style: 7/8" x 3"  
 (7/8" picket spacing)  
 Color: White, Tan, Khaki



**The Davenport®**

Height: 5' & 6'  
 Width: 6' & 8'  
 Picket Style: 7/8" x 3"  
 & 7/8" x 1.5" alternating  
 (7/8" picket spacing)  
 Color: White, Tan, Khaki



**The Glendale™**

Height: 5' & 6'  
 Width: 6' & 8'  
 Picket Style: 7/8" x 6"  
 (7/8" picket spacing)  
 Color: White, Tan, Khaki



**The Alden™**

Height: 5' & 6'  
 Width: 6' & 8'  
 Picket Style: 7/8" x 3"  
 & 7/8" x 6" alternating  
 (7/8" picket spacing)  
 Color: White, Tan, Khaki





# Pool Fencing

Surround your patio, pool or lawn with one of our eye-catching pool fences. These attractive designs add a sense of style to any landscape. While perfect around pools, our pool fencing also looks great in any area of your yard. Our exclusive manufacturing process ensures that all of our vinyl products are resistant to water, humidity and many chemicals for lasting beauty. Our pool style gates include self-closing hinges and a pool safety latch. Plus, the bottom rail is reinforced with aluminum to ensure superior strength.

A beautiful finish that always looks new and resists water and humidity.



## The Captiva™

Height: 4' & 5'(w/ Mid-Rail)  
 Width: 6' & 8'  
 Picket Style: 7/8" x 3"  
 (3.7" picket spacing)  
 Color: White, Tan, Khaki



## The Crestview™

Height: 4' & 5'(w/ Mid-Rail)  
 Width: 6' & 8'  
 Picket Style: 7/8" x 3"  
 (1.7" picket spacing)  
 Color: White, Tan, Khaki



## The Atlantis™

Height: 4' & 5'(w/ Mid-Rail)  
 Width: 6' & 8'  
 Picket Style: 7/8" x 3" &  
 7/8" x 1.5" alternating  
 (3.7" picket spacing)  
 Color: White, Tan, Khaki



## The Sarasota™

Height: 4' & 5'(w/ Mid-Rail)  
 Width: 6' & 8'  
 Picket Style: 7/8" x 3" &  
 7/8" x 1.5" alternating  
 (1.7" picket spacing)  
 Color: White, Tan, Khaki



## The Neptune™

Height: 4' & 5'(w/ Mid-Rail)  
 Width: 6' & 8'  
 Picket Style: 7/8" x 1.5"  
 (3.7" picket spacing)  
 Color: White, Tan, Khaki



## The Williamsport™

Height: 4' & 5'(w/ Mid-Rail)  
 Width: 6' & 8'  
 Picket Style: 7/8" x 1.5"  
 (1.7" picket spacing)  
 Color: White, Tan, Khaki



## The Hanover™

Height: 4' & 5'(w/ Mid-Rail)  
 Width: 6' & 8'  
 Picket Style: 7/8" x 3"  
 (0.6" picket spacing)  
 Color: White, Tan, Khaki



# Picket Fencing

Our classic picket fencing can dramatically change the look of your yard, adding beauty and warmth to the landscape. From simple straight-top to decorative scalloped-top designs, you'll find a wide selection of styles to suit your tastes. Plus, with a Weatherables® fence, you are assured years of durable performance and maintenance-free satisfaction. The bottom rail is reinforced with aluminum for added strength and durability.

A simple solution that adds ornamental style to your landscape.



## The Plymouth™

Height: 3', 4' & 5'  
 Width: 6' & 8'  
 Picket Style: 7/8" x 3"  
 Picket Caps: Dogear or Spade (3" picket spacing)  
 Bottom Rail: 1.5" x 5.5"  
 Color: White, Tan, Khaki



## The Hampshire™

Height: 3', 4' & 5'  
 Width: 6' & 8'  
 Picket Style: 7/8" x 3"  
 Picket Caps: Dogear or Spade (3" picket spacing)  
 Bottom Rail: 1.5" x 5.5"  
 Color: White, Tan, Khaki



## The Chelsea™

Height: 3', 4' & 5'  
 Width: 6' & 8'  
 Picket Style: 7/8" x 3"  
 Picket Caps: Dogear or Spade (3" picket spacing)  
 Bottom Rail: 1.75" x 3.5"  
 Color: White, Tan, Khaki



## The Ellington™

Height: 3', 4' & 5'  
 Width: 6' & 8'  
 Picket Style: 7/8" x 3"  
 Picket Caps: Dogear or Spade (3" picket spacing)  
 Bottom Rail: 1.75" x 3.5"  
 Color: White, Tan, Khaki



## The Provincetown™

Height: 3', 4' & 5'  
 Width: 6' & 8'  
 Picket Style: 7/8" x 3"  
 Picket Caps: Dogear or Spade (1.7" picket spacing)  
 Bottom Rail: 1.75" x 3.5"  
 Color: White, Tan, Khaki



## The Richmond™

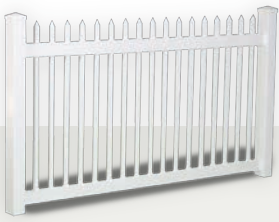
Height: 3', 4' & 5'  
 Width: 6' & 8'  
 Picket Style: 7/8" x 3"  
 Picket Caps: Dogear or Spade (1.7" picket spacing)  
 Bottom Rail: 1.75" x 3.5"  
 Color: White, Tan, Khaki



## The Sanibel™

Height: 3', 4' & 5'  
 Width: 6' & 8'  
 Picket Style: 7/8" x 3"  
 Picket Caps: Dogear or Spade (3" picket spacing)  
 Bottom Rail: 1.75" x 3.5"  
 Color: White, Tan, Khaki

*Picket Fencing continued on next page >>*



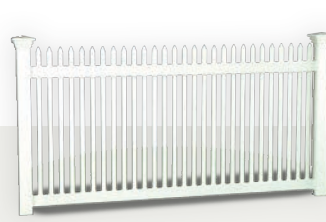
**The Abbington™**

Height: 3', 4' & 5'  
 Width: 6' & 8'  
 Picket Style: 7/8" x 1.5"  
 Picket Caps: Spade  
 (3.7" picket spacing)  
 Bottom Rail: 1.75" x 3.5"  
 Color: White, Tan, Khaki



**The Stratford™**

Height: 3', 4' & 5'  
 Width: 6' & 8'  
 Picket Style: 7/8" x 1.5"  
 Picket Caps: Spade  
 (3.7" picket spacing)  
 Bottom Rail: 1.75" x 3.5"  
 Color: White, Tan, Khaki



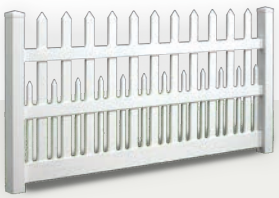
**The Hartford™**

Height: 3', 4' & 5'  
 Width: 6' & 8'  
 Picket Style: 7/8" x 1.5"  
 Picket Caps: Spade  
 (1.7" picket spacing)  
 Bottom Rail: 1.75" x 3.5"  
 Color: White, Tan, Khaki



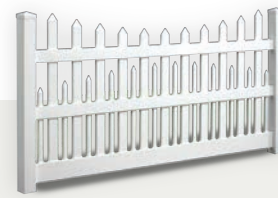
**The Barrington™**

Height: 3', 4' & 5'  
 Width: 6' & 8'  
 Picket Style: 7/8" x 1.5"  
 Picket Caps: Spade  
 (1.7" picket spacing)  
 Bottom Rail: 1.75" x 3.5"  
 Color: White, Tan, Khaki



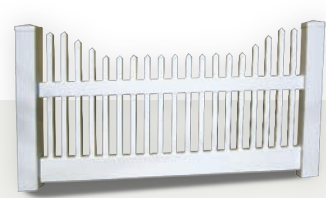
**The Ashville™**

Height: 4' & 5'  
 Width: 6' & 8'  
 Picket Style: 7/8" x 3"  
 & 7/8" x 1.5" alternating  
 Picket Caps: Spade  
 (1.7" picket spacing)  
 Bottom Rail: 1.5" x 5.5"  
 Color: White, Tan, Khaki



**The Salem™**

Height: 4' & 5'  
 Width: 6' & 8'  
 Picket Style: 7/8" x 3"  
 & 7/8" x 1.5" alternating  
 Picket Caps: Spade  
 (1.7" picket spacing)  
 Bottom Rail: 1.5" x 5.5"  
 Color: White, Tan, Khaki



**The Classic™**

Height: 3', 4' & 5'  
 Width: 6' & 8'  
 Picket Style: 1.5" x 1.5"  
 Picket Caps: Spade  
 (2" picket spacing)  
 Bottom Rail: 2" x 6"  
 Color: White, Tan, Khaki



**The Monterey™**

Height: 3', 4' & 5'  
 Width: 6' & 8'  
 Picket Style: 1.5" x 1.5"  
 Picket Caps: Spade  
 (2" picket spacing)  
 Bottom Rail: 2" x 6"  
 Color: White, Tan, Khaki









# Horse Fencing

Beautiful, durable and top-grade quality.

Our horse fencing provides a physical barrier that is visible and safe for horses. It defines property boundaries, adds value to your estate, is low maintenance and offers up to 50% more impact resistance. Choose from elegant styles of durable vinyl fencing paired with best-in-class customer service and lifetime implementation support.



## 2 Rail

Post: 5" x 5" square post  
 Post Length: 5' & 6'  
 Color: White, Tan, Khaki, Gray  
 Rail Spacing: 11"



## 3 Rail

Post: 5" x 5" square post  
 Post Length: 6.5', 7' & 7.5'  
 Color: White, Tan, Khaki, Gray  
 Rail Spacing: 11"



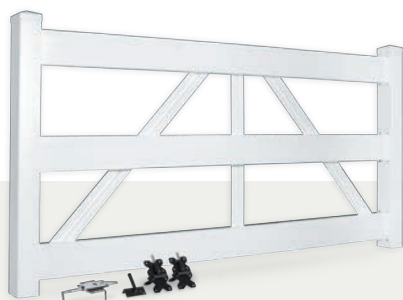
## 4 Rail

Post: 5" x 5" square post  
 Post Length: 7', 7.5' & 8'  
 Color: White, Tan, Khaki, Gray  
 Rail Spacing: 9"



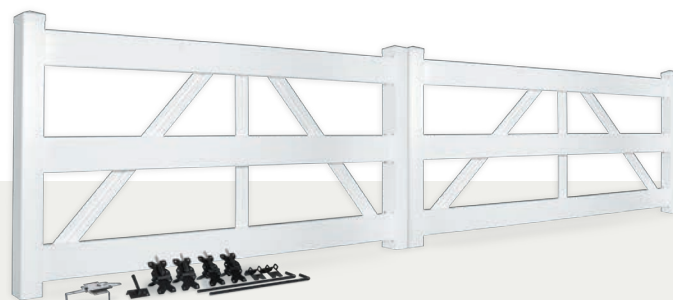
## Cross Buck

Post: 5" x 5" square post  
 Post Length: 7', 7.5' & 8'  
 Color: White, Tan, Khaki



## Single Gate

Sizes: 4' to 12' wide  
 Hardware: Commercial grade stainless steel powder coated black  
 Color: White, Tan, Khaki, Gray  
 Available assembled or in kit form.



## Double Gate

Sizes: 8' to 24' wide, 2 gates, latch in the center  
 Hardware: Commercial grade stainless steel powder coated black, double gate also includes 2 drop rods  
 Color: White, Tan, Khaki, Gray  
 Available assembled or in kit form.

**Gates are available to match all styles of Weatherables® Horse Fencing.**

Weatherables® horse fence is sold by the linear foot. Please visit [weatherables.com](http://weatherables.com) or call (888)743-3673 for pricing.









# Standard Bottom Rail Reinforcement

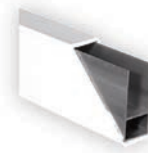
Providing superior strength and durability.

All of our fence styles come standard with an aluminum insert in the bottom rail to ensure maximum strength and lasting durability.

## Standard Bottom Rail Reinforcements



Aluminum  
"I" Channel



Aluminum  
"H" Channel



# Fence Gates

Blending optimal function and long-term performance.

You'll find matching gates for all of our fences that are designed with function and long-term performance in mind. We use the best gate hardware in the industry. Manufactured with rust-free, high-tech engineered polymer and stainless steel components, our gate locks, latches and hinges have a limited lifetime warranty.



Our aluminum gate post inserts add extra strength and stability to your gate to ensure years of uninterrupted gate operation.



# Vinyl Fence Posts

Strong, durable and maintenance-free.

Manufactured from the highest grade materials, our fence posts are the strongest, most durable, low maintenance fence posts you'll find anywhere.



## Blank Post

Post Width: 4" x 4" & 5" x 5"  
 Post Height: 72", 84", 96",  
 108", 120" & 140"  
 Color: White, Tan, Khaki



## End Post

Post Width: 4" x 4" & 5" x 5"  
 Post Height: 72", 84", 96",  
 108", 120" & 140"  
 Color: White, Tan, Khaki



## Line Post

Post Width: 4" x 4" & 5" x 5"  
 Post Height: 72", 84", 96",  
 108", 120" & 140"  
 Color: White, Tan, Khaki



## Corner Post

Post Width: 4" x 4" & 5" x 5"  
 Post Height: 72", 84", 96",  
 108", 120" & 140"  
 Color: White, Tan, Khaki



## Gate End Post

Post Width: 4" x 4" & 5" x 5"  
 Post Height: 72", 84", 96",  
 108", 120" & 140"  
 Color: White, Tan, Khaki  
 (Aluminum insert included)



## Gate Blank Post


Post Width: 4" x 4" & 5" x 5"  
 Post Height: 72", 84", 96",  
 108", 120" & 140"  
 Color: White, Tan, Khaki  
 (Aluminum insert included)

Posts are custom  
 routed to match each  
 specific style of fence.

\*140" post is only available in 5"x5" post size







# **WEATHERABLES<sup>®</sup> RAILING SYSTEMS: THE BEST CHOICE FOR STRENGTH AND DURABILITY.**

**AVAILABLE IN A RANGE OF ATTRACTIVE COLORS**

**EASY TO MAINTAIN**

**FULLY CUSTOMIZABLE**

**IMPACT- AND WEATHER-RESISTANT**

**CODE COMPLIANT**

**FREE SHIPPING**

**A MINIMUM ORDER APPLIES**

# Classic Vinyl Railing

The best choice for strong & durable railing.



## The Greenwich™ Railing

Color: White, Tan, Khaki

Rail: 2" x 3.5" top & bottom rail

Railing Height: 36" & 42" (bottom rail 2" from the ground)

Spindle Style: .875" x 1.5" Rectangular Spindle

Length: 4', 6' & 8'

Aluminum Inserts:

Top Rail Insert–included

Bottom Rail Insert–optional

Stair Rail–Top Rail Insert–included

Bottom Rail Insert–optional

IRC<sup>1</sup>: 4', 6' & 8'–36" & 42"

Brackets Included

## The Yorkshire™ Railing

Color: White, Tan, Khaki

Rail: T-Rail top rail & 2" x 3.5" bottom rail

Railing Height: 36" & 42" (bottom rail 2" from the ground)

Spindle Style: .875" x 1.5" Rectangular Spindle

Length: 4', 6' & 8'

Aluminum Inserts:

Top Rail Insert–included

Bottom Rail Insert–optional

Stair Rail–Top Rail Insert–included

Bottom Rail Insert–optional

IRC<sup>1</sup>: 4', 6' & 8'–36" & 42"

Brackets Included

*\*The brackets included with the classic stair railing are designed for angles of 28° to 42°.*





# Premium Vinyl Railing

Attractive designs manufactured from the highest quality vinyl, up to 50% stronger than other brands.



## The Berkshire™ Railing

Color: White, Tan, Khaki

Rail: 2" x 3.5" top & bottom rail

Railing Height: 36" & 42" (bottom rail 2" from the ground)

Spindle Style: 1.5" Square Spindle

Length: 4', 6' & 8'

Aluminum Inserts:

Top Rail Insert–included

Bottom Rail Insert–optional

Stair Rail–top & bottom rail inserts are included

IRC<sup>1</sup>: 4', 6' & 8'–36" & 42" IBC<sup>1</sup>: 4', 6' & 8'–36" & 42"

Brackets Included

## The Washington™ Railing

Color: White, Tan, Khaki

Rail: T-Rail top rail & 2" x 3.5" bottom rail

Railing Height: 36" & 42" (bottom rail 2" from the ground)

Spindle Style: 1.5" Square Spindle

Length: 4', 6', 8' & 10'

Aluminum Inserts:

Top Rail Insert–included

Bottom Rail Insert–optional

Stair Rail–top & bottom rail inserts are included

IRC<sup>1</sup>: 4', 6', 8' & 10'–36" & 42" IBC<sup>1</sup>: 4', 6', 8' & 10'–36" & 42"

Brackets Included



## The Burlington™ Railing

Color: White, Tan, Khaki

Rail: 2" x 3.5" top & bottom rail

Railing Height: 36" & 42" (bottom rail 2" from the ground)

Spindle Style: 1.5" Colonial Spindle

Length: 4', 6' & 8'

Aluminum Inserts:

Top Rail Insert–included

Bottom Rail Insert–optional

Stair Rail–top & bottom rail inserts are included

IRC<sup>1</sup>: 4', 6' & 8'–36" & 42" IBC<sup>1</sup>: 4', 6' & 8'–36" & 42"

Brackets Included

## The Addison™ Railing

Color: White, Tan, Khaki

Rail: T-Rail top rail & 2" x 3.5" bottom rail

Railing Height: 36" & 42" (bottom rail 2" from the ground)

Spindle Style: 1.5" Colonial Spindle

Length: 4', 6', 8' & 10'

Aluminum Inserts:

Top Rail Insert–included

Bottom Rail Insert–optional

Stair Rail–top & bottom rail inserts are included

IRC<sup>1</sup>: 4', 6', 8' & 10'–36" & 42" IBC<sup>1</sup>: 4', 6', 8' & 10'–36" & 42"

Brackets Included



### The Birmingham™ Railing

Color: White, Tan, Khaki

Rail: T-Rail top rail & 2" x 3.5" bottom rail

Railing Height: 36" & 42" (bottom rail 2" from the ground)

Spindle Style: .75" Black Square Aluminum Spindle

Length: 4', 6', 8' & 10'

Aluminum Inserts:  
 Top Rail Insert–included  
 Bottom Rail Insert–included  
 Stair Rail–top & bottom rail inserts are included

IRC<sup>1</sup>: 4', 6', 8' & 10'–36" & 42" IBC<sup>1</sup>: 4', 6', 8' & 10'–36" & 42"

Brackets Included

### The Wiltshire™ Railing

Color: White, Tan, Khaki

Rail: T-Rail top rail & 2" x 3.5" bottom rail

Railing Height: 36" & 42" (bottom rail 2" from the ground)

Spindle Style: .75" Black Round Aluminum Spindle

Length: 4', 6', 8' & 10'

Aluminum Inserts:  
 Top Rail Insert–included  
 Bottom Rail Insert–included  
 Stair Rail–top & bottom rail inserts are included

IRC<sup>1</sup>: 4', 6', 8' & 10'–36" & 42" IBC<sup>1</sup>: 4', 6', 8' & 10'–36" & 42"

Brackets Included



### The Cheshire™ Railing

Color: White, Tan, Khaki

Rail: T-Rail top rail & 2" x 3.5" bottom and mid rail

Railing Height: 42" (bottom rail 2" from the ground)

Spindle Style: 1.5" Square Spindle

Length: 4', 6', 8' & 10'

Aluminum Inserts:  
 Top Rail Insert–included  
 Bottom Rail Insert–optional  
 Stair Rail–N/A

IRC<sup>1</sup>: 4', 6', 8' & 10'–42" IBC<sup>1</sup>: 4', 6', 8' & 10'–42"

Brackets Included

### Aluminum Insert (2" x 3.5" & T-Rail)

The aluminum inserts needed to meet testing requirements are included with each railing kit. Additional aluminum inserts are available for custom installations.

Size: 2" x 3.5" x 48"  
 Size: 2" x 3.5" X 72"  
 Size: 2" x 3.5" X 96"  
 Size: 2" x 3.5" X 120"

*\*The brackets included with the premium stair railing are designed for angles of 30° to 40°.*



# Vinyl Railing Gates

Blending optimal function and long-term performance, with top-of-the-line hardware.



## .875" x 1.5" Rectangular Spindle

Style: Greenwich & Yorkshire  
 Color: White, Tan, Khaki  
 Rail: 2" x 3.5" or T-Rail top rail  
 Height: 36" & 42" (bottom rail 2" from the ground)



## 1.5" Square Spindle

Style: Berkshire & Washington  
 Color: White, Tan, Khaki  
 Rail: 2" x 3.5" or T-Rail top rail  
 Height: 36" & 42" (bottom rail 2" from the ground)



## 1.5" Colonial Spindle

Style: Burlington & Addison  
 Color: White, Tan, Khaki  
 Rail: 2" x 3.5" or T-Rail top rail  
 Height: 36" & 42" (bottom rail 2" from the ground)



## 1.5" Square Spindle

Style: Cheshire  
 Color: White, Tan, Khaki  
 Rail: T-Rail top rail  
 Height: 42" (bottom rail 2" from the ground)



## .75" Square Aluminum Spindle

Style: Birmingham  
 Color: White, Tan, Khaki  
 Rail: T-Rail top rail  
 Height: 36" & 42" (bottom rail 2" from the ground)



## .75" Round Aluminum Spindle

Style: Wiltshire  
 Color: White, Tan, Khaki  
 Rail: T-Rail top rail  
 Height: 36" & 42" (bottom rail 2" from the ground)

Gate kits include commercial grade polyvinyl hardware:



Key-lockable latch



Self-closing hinges

# Aluminum Railing

An economical alternative to traditional wrought-iron.

Offering a sleek, clean look, our premium quality aluminum railing is manufactured from the best aluminum in the industry - and it's American made. No matter what Mother Nature decides to throw at it, it will not cause excessive corrosion or rust.



## The Fairlawn Aluminum Railing

Color: Textured Black, More Available

Rail: Molded top rail & 1.3" x 1.4" bottom rail

Railing Height: 36" & 42" (bottom rail 2" from the ground)

Spindle Style: .75" Square Spindles

Length: 4', 6', 8' & 10'

Stair Rail Length: 6' & 8'

IBC<sup>2</sup>: 4', 6', 8' & 10' - 36" & 42" IBC<sup>2</sup>: 4', 6', 8' & 10' - 36" & 42"

Brackets Included

*\*The brackets included with the aluminum stair railing are designed for angles of 30° to 40°.*

**“YOUR PRODUCTS WERE WONDERFUL. EXCELLENT QUALITY AND VERY EASY FOR DO-IT-YOURSELFERS. WE USED YOUR VINYL RAILINGS ON OUR PORCH AND ALSO PUT UP ONE OF YOUR FENCES. THEY LOOK BEAUTIFUL AND ARE SO STURDY. YOUR CUSTOMER SERVICE PEOPLE WERE VERY HELPFUL WITH OUR ORDERS. ALL IN ALL A GREAT EXPERIENCE.”**

**- GINNY, NY**



# Railing & Decking Accessories

Add ambiance to your outdoor space with easy to install lighting.



## LED Under Rail Light Strip

Size: 68"–for 72" Railing–10" lead wire  
AXLV-UNDRAIL-72

Size: 92"–for 96" Railing–10" lead wire  
AXLV-UNDRAIL-96



## LED Under Rail Light

Size: 3"–10" lead wire  
AWLV-UNDLGT



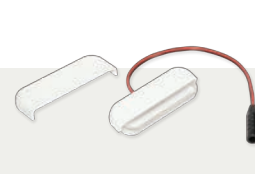
## LED Dome Side Light

Size: 2.75" (round) x 1.344" (depth)  
9" lead wire  
AWLV-DMLGT



## LED Flush Deck Light–Frosted Acrylic

Size: .955" (diameter) x .685" (depth)  
9" lead wire  
AWLV-FLSDKLGT



## LED Stair/Side Light with Covers

Size: 1.130" x 3.223"  
AWLV-STRLGT

# Power Supply and Wiring Harnesses

(Works with the low voltage LED lights above and with the low voltage LED post caps on page 31)



## 50 Watt Power Supply with Photo Eye, Timer and Remote

AXLV-PWRSUP-50



## 12 Watt Power Supply with Photo Eye

AXLV-PWRSUP-12



## 12 Watt Dimmer Switch LED Low Voltage Power Supply w/ Photo Eye

(includes remote control)  
AXLV-DIMMER-12



## 2' Harness Connector

AXLV-HARN-2



## 5' Harness Connector

AXLV-HARN-5



## 7' Harness Connector

AXLV-HARN-7



## 9' Harness Connector

AXLV-HARN-9



## 5 Output Splitter

AXLV-SPLT-5

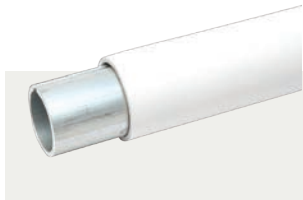


## 2 Output Splitter

AXLV-SPLT-2

# Secondary (ADA) Railing

All the parts you need for ADA-compliant installations.



**104" Rail with Stiffener**

NWRA-ADARAIL-1.5X104



**Hand Rail Bracket Kit**

NWRA-ADARAILBRK-1.5



**Straight Wall Return Kit**

NWRA-ADASTRTN-1.5



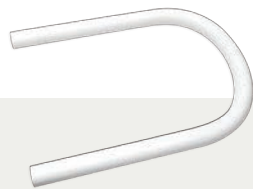
**Bracket Wall Return Cover Plate (4/bag)**

NWRA-ADACVRPLT-1.5



**Post Return**

NWRA-ADAPTRTN-16.5X6



**End Loop**

NWRA-ADALOOP-18X12



**90° Wall Return Kit**

NWRA-ADAWALLRTN-1.5



**90° Wall Return Kit w/Joiner**

NWRA-ADAWALLJOIN-1.5



**90° Exterior Corner**

NWRA-ADACORNER-1.5



**90° Exterior Corner w/Joiner**

NWRA-ADACORNJOIN-1.5



**90° Interior Corner**

NWRA-ADACORNERINS-1.5



**Straight Joiner (4/bag)**

NMRA-ADASTJOIN-6



**Adjustable Joiner (4/bag)**

NMRA-ADAJJOINADJ-1.5



**Joint Ring (4/bag)**

NWRA-ADAJTRING-1.5



**Rail End Cap (4/bag)**

NWCP-ADARAILEND-1.5



**External Adjustable Joiner with Male Ends and Joint Rings**

NWRA-ADAEXADJOIN-1.5



# Aluminum Accessories

Aluminum accessories available in:  
Textured Black and more colors  
by request.

Expand your options with our matching fittings.



## Aluminum Post Kits

Includes post cap, 2-piece post skirt and welded base flange (fasteners not included).

Size: 3" x 3" x 38"  
LBAL-POSTKIT-3X38

Size: 3" x 3" x 44"  
LBAL-POSTKIT-3X44

Size: 3" x 3" x 54"  
LBAL-POSTKIT-3X54



## Round Aluminum Balusters

Design your own custom railing with premium quality, powder coated balusters (connectors included).

WBR-32RNDSTRGHTKIT-10 (32" x .75" set of 10)

WBR-32RNDSTRKIT-10 (32" x .75" set of 10)

WBR-38RNDSTRGHTKIT-10 (38" x .75" set of 10)

WBR-38RNDSTRKIT-10 (38" x .75" set of 10)

\*Also available in larger quantities



## Square Aluminum Balusters

Design your own custom railing with premium quality, powder coated balusters (connectors included).

WBR-32SQSTRGHTKIT-10 (32" x .75" set of 10)

WBR-32SQSTRKIT-10 (32" x .75" set of 10)

WBR-38SQSTRGHTKIT-10 (38" x .75" set of 10)

WBR-38SQSTRKIT-10 (38" x .75" set of 10)

\*Also available in larger quantities



## Straight Aluminum Railing Brackets

(includes fasteners and foot block)

ABAL-STRGHTSET



## Stair Aluminum Railing Adjustable Brackets

(includes fasteners)

ABAL-ADJSTAIRSET



## Horizontal Aluminum Railing Adjustable Brackets

(includes fasteners and foot block)

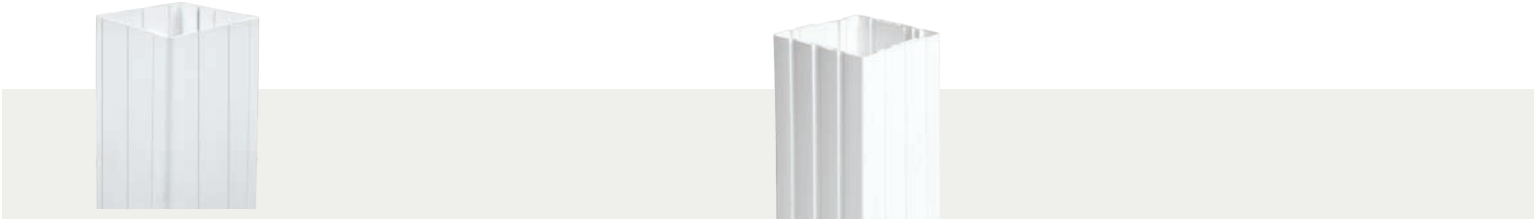
ABAL-ADJSTRGHTSET

# Wraps

For use around new or existing wood posts.

Available in: White, Tan or Khaki  
(unless noted) Replace the "X" in the product code with the selected color option:

- White= W
- Tan= T
- Khaki=K



## Smooth Vinyl Post Wrap

- Size: 4" x 4" x 96"; AXPT-WRAP-4X96
- Size: 4" x 4" x 120"; AXPT-WRAP-4X120
- Size: 6" x 6" x 96"; AXPT-WRAP-6X96
- Size: 6" x 6" x 120"; AXPT-WRAP-6X120

\*Installed size is 0.25" larger than post wrap size  
\*For use with Adjustable Post Skirt only

## Fluted Vinyl Post Wrap (White only)

- Size: 4" x 4" x 102"; AWPT-WRAPFLUTELBP-4X102
- Size: 4" x 4" x 120"; AWPT-WRAPFLUTELBP-4X120
- Size: 8" x 8" x 102"; AWPT-WRAPFLUTELBP-8X102
- Size: 8" x 8" base molding; AWPT-WRAPFLTRIM4PC-8

\*Installed size is 0.25" larger than post wrap size  
\*For use with Adjustable Post Skirt only

# Skirts

Decorative trim at the base of each post provides a finished look.



## Post Skirt

- Size: 4" x 4"-AXPT-SKIRT-4
- Size: 5" x 5"-AXPT-SKIRT-5
- Size: 6" x 6"-AXPT-SKIRT-6

\*More sizes available

## 4-Piece Adjustable Post Skirt

Size: ADJUSTABLE-AXPT-WRAPTRIM4PC-ADJ

\*Fits a 3", 3.5", 4", 5", 6" & 6.5" post

## 2-Piece Federation Post Skirt

- Size: 4" x 4"-AXPT-SKIRT2PC-4
- Size: 5" x 5"-AXPT-SKIRT2PC-5

\*More sizes available



# Vinyl Sleeves

Attractive covers that fit over our post mounts.

Available in: White, Tan or Khaki (unless noted) Replace the "X" in the product code with the selected color option:

-  White= W
-  Tan= T
-  Khaki=K



## Vinyl Blank Post Sleeve Kit

(Includes external post cap and post skirt)

- Size: 4" x 4" X 38"-WXR-POSTKIT-4X38
- Size: 4" x 4" X 44"-WXR-POSTKIT-4X44
- Size: 4" x 4" X 54"-WXR-POSTKIT-4X54

## Vinyl Blank

- Size: 4" x 4" x 38"-LXPT-BLANK-4X38
- Size: 4" x 4" x 44"-LXPT-BLANK-4X44
- Size: 4" x 4" x 72"-LXPT-BLANK-4X72
- Size: 4" x 4" x 84"-LXPT-BLANK-4X84

\*More sizes available, and will fit over 4"x4" treated wood



## Vinyl Newel: Recessed

(White only)

- Size: 5" x 5" x 38"-LWPT-NEWELREC-5X38
- Size: 5" x 5" x 54"-LWPT-NEWELREC-5X54

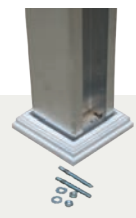
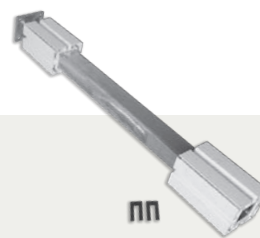
## Vinyl Newel: Colonial

(White only)

- Size: 4" x 4" x 38"-LWPT-NEWELCOL-4X38
- Size: 4" x 4" x 54"-LWPT-NEWELCOL-4X54

# Mounts

Simplify your post installation.



## Railing Post Mount with Wood Fasteners

- AMPT-HDMOUNTWD-4X36
- AMPT-HDMOUNTWD-4X42

## Railing Post Mount with Concrete Fasteners

- AMPT-HDMOUNTCC-4X36
- AMPT-HDMOUNTCC-4X42

## General Mount

- NOT FOR COMMERCIAL APPLICATION (mounting hardware sold separately)
- AMPT-GENMOUNT-4X36
- AMPT-GENMOUNT-5X36

## Fence Concrete Mount

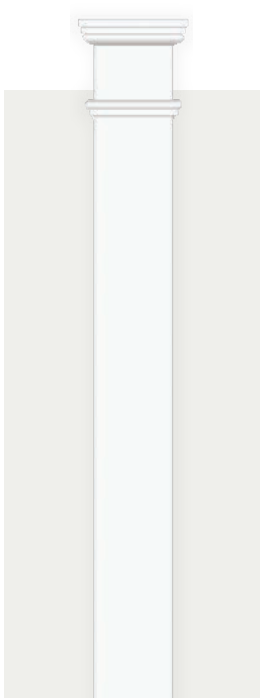
- AXPT-CMOUNT-5X54

# Vinyl Columns

Supported by extruded aluminum for lightweight durability and superior strength.

Available in: White, Tan or Khaki (unless noted) Replace the "X" in the product code with the selected color option:

- White= W
- Tan= T
- Khaki=K

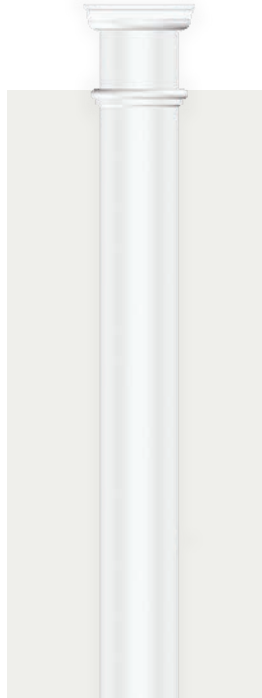


## Square Column

(White only)

Size: 8" x 8" x 96"  
LWPT-SQCOLKIT-8X96

Size: 8" x 8" x 120"  
LWPT-SQCOLKIT-8X120  
(tested load of 11,000 lb.)

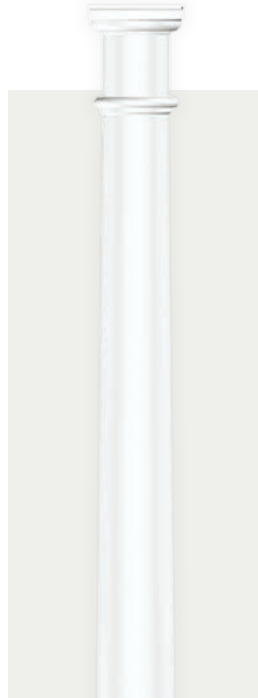


## Round Straight Column

(White only)

Size: 8" x 8" x 108"  
LWPT-RNDSTCOLKIT-108

(tested load of 18,000 lb.)



## Round Tapered Column

(White only)

Size: 8" x 8" x 108"  
LWPT-RNDTPCOLKIT-108

Size: 8" x 8" x 120"  
LWPT-RNDTPCOLKIT-120  
(tested load of 18,000 lb.)



## Colonial Structural

Size: 4" x 4" x 108"  
LXPT-PPCOL-4X108

Size: 5" x 5" x 108"  
LXPT-PPCOL-5X108  
(tested load of 11,000 lb.)



## Square Structural

Size: 4" x 4" x 108"  
LXPT-PPSQ-4X108

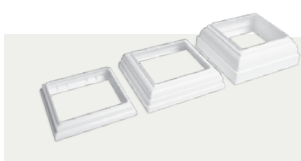
Size: 5" x 5" x 108"  
LXPT-PPSQ-5X108

Size: 6" x 6" x 108"  
LXPT-PPSQ-6X108  
(tested load of 11,000 lb.)

\*More sizes available

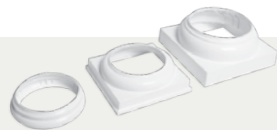
(Top & bottom skirts/trim kits are not included, but can be purchased separately)

## Trim Kits



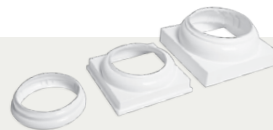
### Square Column

AWPT-BASE&COLLAR-8X8



### Round Straight Column

AWPT-BASE&COLLAR-RNDST



### Round Tapered Column

AWPT-BASE&COLLAR-RNDTP

Use skirts on page 23 with the Colonial Structural and Square Structural columns.

# Classic Brackets

Secure, sturdy brackets for Greenwich and Yorkshire railing.

Available in: White, Tan or Khaki (unless noted) Replace the "X" in the product code with the selected color option:

- White= W
- Tan= T
- Khaki=K



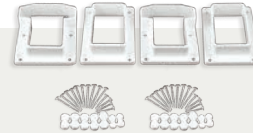
**2" x 3.5" 1-Piece Straight Kit**

AXBR-CVSTRGHTKIT-2X3.5



**2" x 3.5" 1-Piece Stair Kit**

AXBR-CVSTAIRKIT-2X3.5



**T-Rail & 2" x 3.5" 1-Piece Straight Kit**

AXBR-CVSTRGHTKIT-TRAIL



**T-Rail & 2" x 3.5" 1-Piece Stair Kit**

AXBR-CVSTAIRKIT-TRAIL

*\*Classic stair rail brackets are designed for angles of 28° to 42°.*

This row of adapters fit only the brackets above.



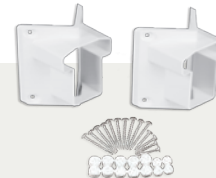
**8" 1-Piece Bracket Column Adapter**

AXBR-CVCOLADAPTER-8



**8" 1-Piece Bracket Stair Column Adapter**

AXBR-CVCOLSTAIRADP-8



**45° 1-Piece Bracket T-Rail Adapter**

AXBR-CV45ADAPTER-TRAIL



**45° 1-Piece Bracket 2" x 3.5" Adapter**

AXBR-CV45ADAPTER-2X3.5

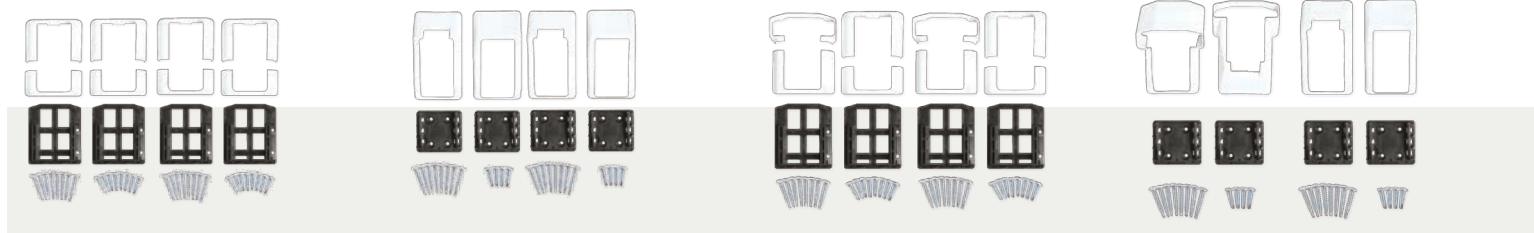


# Premium Brackets

Dependable accessories for our premium line of railing.

Available in: White, Tan or Khaki (unless noted) Replace the "X" in the product code with the selected color option:

- White= W
- Tan= T
- Khaki=K



**2" x 3.5" 2-Piece Straight Kit**

AXBR-STRGHTKIT-2X3.5

**2" x 3.5" 2-Piece Stair Kit**

AXBR-STAIRKIT-2X3.5

**T-Rail & 2" x 3.5" 2-Piece Straight Kit**

AXBR-STRGHTKIT-TRAIL

**T-Rail & 2" x 3.5" 2-Piece Stair Kit**

AXBR-STAIRKIT-TRAIL

*\*Premium stair rail brackets are designed for angles of 30° to 40°.*

This row of adapters fit only the brackets above.



**8" 2-Piece Bracket Column Adapter**

AXBR-COLADAPTER-8



**8" 2-Piece Bracket Stair Column Adapter**

AXBR-COLSTAIRADP-8



**45° 2-Piece Bracket Adapter**

AXBR-45ADAPTER

# Classic and Premium Brackets

Universal accessories offer ultimate versatility.

Available in: White, Tan or Khaki (unless noted) Replace the "X" in the product code with the selected color option:

- White= W
- Tan= T
- Khaki=K



## 2" x 3.5" Horizontal Adjustable Set

AXBR-WIZANGLE-2X3.5



## T-Rail & 2" x 3.5" Horizontal Adjustable Set

AXBR-WIZANGLE-TRAIL



## 2" x 3.5" Vertical Adjustable Set

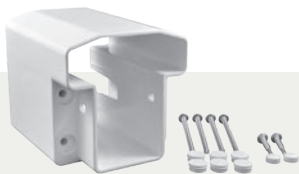
AXBR-WIZSTAIR-2X3.5



## T-Rail & 2" x 3.5" Vertical Adjustable Set

AXBR-WIZSTAIR-TRAIL

\*Brackets above are designed for angles of 15° to 45°.



## T-Rail Field Cut Bracket

AXBR-FIELD-TRAIL



## 2" x 3.5" Field Cut Bracket

AXBR-FIELD-2X3.5

# Foot Blocks

For added strength when splitting a rail section.



## Premium Foot Block

AXRA-FOOTBLOCK-1.5



## Classic Foot Block

AXRA-CVFOOTBLOCK-1.5X1.5X8

# U-mounts

Custom installation made easy.

Available in: White, Tan or Khaki  
(unless noted) Replace the "X" in  
the product code with the selected  
color option:

White= W

Tan= T

Khaki=K



Fasteners sold  
separately.

## 1.5" x 5.5" U-mount

AXBR-UMOUNT-1.5X5.5

## 1.75" x 3.5" U-mount

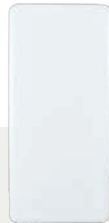
AXBR-UMOUNT-1.75X3.5

## 2" x 6" U-mount

AXBR-UMOUNT-2X6

# Post Hole Covers

Providing a clean look to your finished project.



## 1.5" x 5.5" Post Hole Cover

AXCP-CVR-1.5X5.5

## 1.75" x 3.5" Post Hole Cover

AXCP-CVR-1.75X3.5

## Hinged Screw Cap

AXCP-SCREWCAP

(fits a #10 panhead screw)



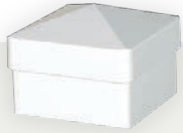




# Post Caps

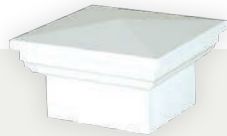
Enhance your look with architectural details and lighting.

(All styles available in multiple sizes, unless noted otherwise)



**External**

Size: 4" x 4" & 5" x 5"  
Color: White, Tan, Khaki



**New England**

Size: 4" x 4" & 5" x 5"  
Color: White, Tan, Khaki



**Gothic**

Size: 4" x 4" & 5" x 5"  
Color: White, Tan, Khaki



**Ball**

Size: 4" x 4" & 5" x 5"  
Color: White, Tan, Khaki



**Federation**

Size: 4" x 4" & 5" x 5"  
Color: White, Tan, Khaki



**Cape May**

Size: 4" x 4" & 5" x 5"  
Color: White, Tan, Khaki



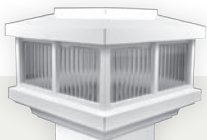
**Classic Solar LED**

Size: 4" x 4" & 5" x 5"  
Color: White, Tan, Khaki



**Galaxy Solar LED**

Size: 4" x 4" & 5" x 5"  
Color: White, Tan



**Cambridge Solar LED**

Size: 4" x 4" & 5" x 5"  
Color: White, Tan, Khaki



**Solar Wedge LED**

Size: 1.875" x 4.5" only  
Color: White, Tan



**Neptune Downward Solar LED**

Size: 4" x 4" & 5" x 5"  
Color: White, Tan, Khaki



**Cape May Downward Solar LED**

Size: 4" x 4" & 5" x 5"  
Color: White, Tan, Khaki

(All low-voltage LED post caps work with power supplies and wiring harnesses on page 20)



**Neptune Low Voltage LED**

Size: 4" x 4" & 5" x 5"  
Color: White, Tan, Khaki



**Neptune Downward Low Voltage LED**

Size: 4" x 4" & 5" x 5"  
Color: White, Tan, Khaki



**Cape May Low Voltage LED**

Size: 4" x 4" & 5" x 5"  
Color: White, Tan, Khaki



**Cape May Downward Low Voltage LED**

Size: 4" x 4" & 5" x 5"  
Color: White, Tan, Khaki



\*1 - Tested in accordance with ICC-ES AC174 Standards – 2016 PEI Report – PER-12049  
\*2 - Tested in accordance with ICC-ES AC174 Standards – 2016 ATI Report – CCRR-0223

# weatherables®

WSR-WEAFULL-2017

Purchaser has the sole responsibility to determine whether Weatherables® products comply with applicable codes and are appropriate for the intended use. The purchaser and installer should review the intended use of the products with a licensed professional engineer to determine code compliance and the intended use.



Weatherables® is a federally registered trademark of USA Vinyl, LLC. ©2017 USA Vinyl, LLC.